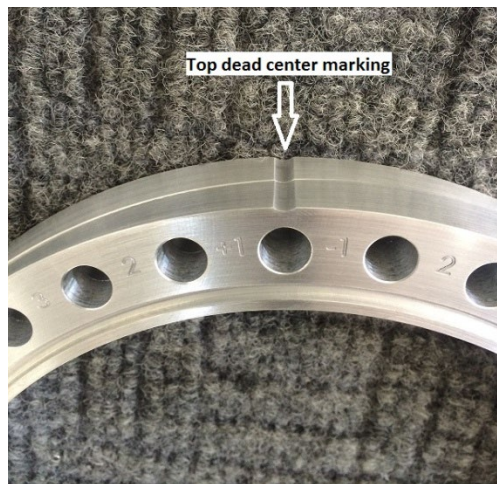




## 0-8 Degree wedge

Apply grease to the face of the o-ring's

The wedge with o-rings on both sides is installed first with the flat side facing towards the bow. The top dead center marking should be in its highest possible position.



The second wedge should be installed with the numbered side facing towards the nozzle side with top dead center mark in its highest possible position. This is 0 DEGREES.

To achieve + 1 DEGREES simply rotate the bow side wedge 1 hole CCW from TDC and nozzle side wedge 1 hole CW from TDC.

It should look something like this.



Notice +1 is now TDC. You can repeat this process until the 8 is sitting at TDC. You may also perform the inverse of this process to achieve - wedge.

Be sure to use the Criss-Cross or star pattern when tightening nuts to insure equal torque distribution and allow for best possible seal.



If you feel your current studs are not long enough, please replace them with studs of the proper length. You can also find studs at **JettStore.com** If you have any questions please call (480) 944-9200

Jett Products assumes no responsibility for faulty installation or operator neglect.

ENJOY!